

Penshurst Primary School

Emergency Management Plan 2018-2019



87 Ritchie Street, Penshurst, VIC, 3289

03 5576 5433 / penshurst.ps@edumail.vic.gov.au

Department of Education and Training

Date Approved: 29/10/2018

Purpose

The purpose of this Emergency Management Plan (EMP) is to provide a detailed plan of how this school campus will prepare and respond to emergency situations.

Scope

This EMP applies to all staff, students, visitors, contractors and volunteers at this school campus.

Distribution List

Name	Position Title and Organisation Name	Communication Date	Email or Postal Address
Paula Cuttler	Vic Police	23/02/2017	paula.cuttler@police.vic.gov.au
All school staff	Penshurst Primary School	16/10/2017	penshurst.ps@edumail.vic.gov.au

Facility Profile

School Name/Campus Name	Penshurst Primary School
Address	87 Ritchie Street, Penshurst, VIC, 3289
Phone	03 5576 5433
Email	penshurst.ps@edumail.vic.gov.au
Fax	03 5576 5391
DET Region	SOUTH-WESTERN VICTORIA
DET Area	Wimmera South West Area
LGA	Southern Grampians (S)
BOM/Fire District	South West District
Is your school on Bushfire At- Risk Register?	No
Bushfire At-Risk Register Category	
Operating Hours	9:00-3:30
Number of Students	8
Number of Staff	3
Number of Buildings	3
Is the School a designated Neighborhood Safer Place?	No
Shelter-In-Place Location	Sports Stadium
On-site Evacuation Location	Front gate - letter box
Off-site Evacuation Location	Penshurst Memorial Hall

Typical method used for communications to school community	SMS Newsletter Facebook
Is this school has other services or users of the site?	No

Other Services/Users of Site

Service/User Name	Location	Number of Student or Visitor	Emergency Contact	Phone	Mobile

Building Information Summary

Telephones (landlines)

Location	Number
Through out	55765433

Alarms

Description	Location	Monitoring Company	Number
Fire			
Intrusion	school front foyer		need a tab to swipe
Other			

Utilities

Description	Location	Service Provider	Location of shutoff Instructions
Gas / Propane			
Water	on main road	Wannon Water	turn tap

Electricity	at front door		turn all off
-------------	---------------	--	--------------

Sprinkler System

Control Valve Location	N/A
Shutoff Instructions Location	N/A

Boiler Room

Location	N/A
Access	N/a

Emergency Power System

Type	N/A
Location	N/A
Provides power to	N/A
Shutoff Instructions Location	N/A

Building and Site Hazards

Location	Number

Additional Profile Information

Additional Info	

Emergency Kit Checklist

Checklist	Yes / No
Student data and parent contact information (contained in EMP)	Yes
Student and staff with additional needs list (contained in EMP) including any student medications	Yes
Staff contact information	Yes
Student Release Forms/sign out book	Yes
List of staff on the IMT	Yes
Traffic/emergency safety vests and tabards	Yes
Facility keys	Yes
Standard portable First Aid Kit. Refer to First Aid Kits Contents Checklist	Yes
A charged mobile phone and charger/s	Yes
Torch with replacement batteries (or wind up torch)	Yes
Whistle	Yes
Portable battery powered radio	Yes
Copy of facility site plan and EMP including evacuation routes	Yes
Water	Yes
Sunscreen and spare sunhats	Yes
Plastic garbage bags and ties	Yes
Toiletry supplies	Yes
Sanitary products	Yes

Review Emergency kit checked date

Date emergency kit checked	22/10/2018
-----------------------------------	------------

Next check date	06/02/2019
------------------------	------------

Drill Schedule

School Term	Drill Type	Contact Person	Schedule Date	Actual Date
Term 1	Lock down	Fiona	13/02/2019	
Term 2	Evacuation and relocation drill	Fiona	16/05/2018	
Term 3	Evacuation and relocation drill	fiona	22/08/2018	
Term 4	Evacuation and relocation drill	Fiona	28/11/2018	

First Aid Training

Staff Member	Training Completed	Date Qualified To
Fona Hermon	Level1 Asthma/Anaphlyaxis	12/09/2018
Fiona King	Level 1 Asthma/Anaphlyaxis	12/09/2018
Mel Robertson	Level 1 Asthma/Anaphlyaxis	12/09/2018

Other Training Record

Staff Member	Training Type	Date

Students or Staff with Additional Needs

To ensure adherence to the provisions of the Information Privacy Act 2000 you should not record personal details here.

Add summary of those with additional needs or medical conditions below, without including personal details.

Category	Number of Staff	Number of Students
Anaphylaxis	0	0

Risk Assessment

Identified Hazards	Description of Risk	Existing Controls	Effectiveness of existing controls	Risk Rating	Controls to be implemented	Revised Risk Rating
Building fire	Physical or psychological injury could occur to staff, students, visitors or contractors if threatened or physically assaulted by an intruder. There is a risk that property could be damaged.	Fire extinguishers are checked every 6 months and easily accessed.	Acceptable	Consequence Moderate Likelihood Possible Risk Level Medium		
Intruder	Physical or psychological injury could occur to staff, students, visitors or contractors if threatened or physically assaulted by an intruder. There is a risk that property could be damaged.	Lock down drill carried out. New doors and windows - windows now lockable and doors most can be opened from inside but not outside when locked.	Acceptable	Consequence Moderate Likelihood Unlikely Risk Level Medium		
Bomb/substance threat	Physical or psychological injury could occur to staff, visitors or contractors.	Staff aware and know what to look for - plan available and known by staff and students	Acceptable	Consequence Major Likelihood Unlikely Risk Level Medium		
Severe weather event	Risk of roof down flooding Risk of injury Risk of property damage. Physical injury to staff or students Stress or psychological injury requiring clinical support for multiple individuals	Staff monitor weather conditions Staff carry out visual checks of facilities	Acceptable	Consequence Major Likelihood Possible Risk Level High		
Influenza pandemic	Risk of health and possible death (in extreme cases)	Health covered in the curriculum Parents reminded in newsletter of exclusions when students are unwell	Acceptable	Consequence Major Likelihood Unlikely Risk Level Medium		
Loss of essential services	Lack of availability of school resources such as computers	Lack of school resources - reorganise lessons	Acceptable	Consequence		

	Lack of availability of fresh drinking water and water for flushing toilets	lack of water - we have access to town water and tank water to minimise this issue.		Minor Likelihood Unlikely Risk Level Low		
--	---	---	--	--	--	--

Core Emergency Response Procedures

Core Procedures	Procedure Instructions
<p>On-site evacuation/relocation procedure</p>	<p>When it is unsafe for students, staff and visitors to remain inside the school building the Chief Warden on-site will take charge and activate the Incident Management Team if necessary.</p> <ul style="list-style-type: none"> • Call 000 for emergency services and seek and follow advice. • Evacuate students, staff and visitors to your school letter box (at front gate) • Report the emergency and evacuation to Security Services Unit (24 hour, 7 days) on 9603 7999. • Take your emergency kit/first aid kit (including your student and staff attendance lists and a copy of this EMP). • Once at your primary and/or secondary assembly point/s, check all students, staff and visitors are accounted for. • Ensure communications with emergency services is maintained. • Wait for emergency services to arrive or provide further information. • Notify your region and seek advice from your regional Manager, Operations and Emergency Management if required. • Confirm with emergency service personnel that it is safe to return to normal operations. • Maintain a record of actions/decisions undertaken and times. • Contact parents as required. <p>Actions after on-site evacuation/relocation procedure</p> <ul style="list-style-type: none"> • Ensure any students, staff or visitors with medical or other needs are supported. • Advise the Security Services Unit and the region (regional Manager, Operations and Emergency Management) that the evacuation is over. • Determine whether to activate your parent re-unification process. • Determine if there is any specific information students, staff and visitors need to know (for example, parent reunification process or areas of the facility to avoid). • Contact the SSSO Network Coordinator if required. • Print and issue pre-prepared parent letters and give these to students to take home. • Ensure all staff are made aware of Employee Assistance Program contact details. • Seek support from your region/regional Manager, Operations and Emergency Management if required. • Undertake operational debrief with staff and Incident Management Team to identify any on-site evacuation and procedural changes that may be required. • Complete your Post Emergency Record.
<p>Off-site evacuation procedure</p>	<p>If it is unsafe for students, staff and visitors to remain on the school grounds the Chief Warden on-site will take charge and activate the Incident Management Team if necessary.</p> <ul style="list-style-type: none"> • Call 000 for emergency services and seek and follow advice. • Identify which off-site assembly point you will evacuate staff, students and visitors to. • Evacuate staff, students and visitors to your Penshurst Hall • Report the emergency and evacuation to Security Services Unit (24 hour, 7 days) on 9603 7999. • Take your emergency kit/first aid kit (including your student and staff attendance lists and a copy of this EMP). • Once at primary and/or secondary assembly point/s, check all students, staff and visitors are accounted for. • Ensure communications with emergency services is maintained. • Wait for emergency services to arrive or provide further information.

	<ul style="list-style-type: none"> • Notify your region and seek advice from your regional Manager, Operations and Emergency Management if required. • Confirm with Emergency Service personnel that it is safe to return to normal operations. • Maintain a record of actions/decisions undertaken and times. • Contact parents as required. <p>Actions after off-site evacuation procedure</p> <ul style="list-style-type: none"> • Ensure any students, staff or visitors with medical or other needs are supported. • Advise the Security Services Unit and the region (regional Manager, Operations and Emergency Management) that the evacuation is over. • Determine whether to activate your parent re-unification process. • Determine if there is any specific information students, staff and visitors need to know (for example, parent reunification process or areas of the facility to avoid). • Direct all Media enquiries to DET Media Unit on 9637 2871. • Contact the SSSO Network Coordinator if required. • Print and issue pre-prepared parent letters and give these to students to take home. • Ensure all staff are made aware of Employee Assistance Program contact details. • Seek support from your region/regional Manager, Operations and Emergency Management if required. • Undertake operational debrief with staff and Incident Management Team to identify any off-site and procedural changes that may be required. • Complete your Post Emergency Record.
<p>Lock-down procedure</p>	<p>When an external and immediate danger is identified and it is determined that the students should be secured inside the building for their own safety the Chief Warden on-site will take charge and activate the Incident Management Team if necessary.</p> <ul style="list-style-type: none"> • Call 000 for emergency services and seek and follow advice. • Initiate the lock-down and provide instructions to staff, for example, close internal doors and windows, remain in classroom, sit below window level or move into corridors. • Check that all external doors (and windows if appropriate) are locked. • If available, allocate staff to be posted at locked doors to allow students, staff and visitors to enter if locked out. • Report the emergency and lock-down to the Security Services Unit (24 hour, 7 days) on 9603 7999. • Divert parents and returning groups from the school if required. • Ensure a telephone line is kept free. • Keep public address system free. • Keep main entrance as the only entry point. It must be constantly monitored and no unauthorised people allowed access. • If safe to do so, have a staff member wait at the main entry to the school to guide emergency services personnel. • As appropriate, ascertain that all students, staff and visitors are accounted for. • Notify your region and seek advice from your regional Manager, Operations and Emergency Management if required. • As appropriate, confirm with emergency services personnel that it is safe to return to normal operations. • Maintain a record of actions/decisions undertaken and times. • Contact parents as required. <p>Actions after lock-down procedure</p> <ul style="list-style-type: none"> • Ensure any students, staff or visitors with medical or other needs are supported.

	<ul style="list-style-type: none"> • Advise the Security Services Unit and the region (regional Manager, Operations and Emergency Management) that the lock-down is over. • Determine whether to activate your parent re-unification process. • Determine if there is any specific information students, staff and visitors need to know (for example, parent reunification process or areas of the facility to avoid). • Direct all Media enquiries to DET Media Unit on 9637 2871. • Print and issue pre-prepared parent letters and give these to students to take home. • Contact the SSSO Network Coordinator if required. • Ensure all staff are made aware of Employee Assistance Program contact details. • Seek support from your region/regional Manager, Operations and Emergency Management if required. • Undertake operational debrief with staff and Incident Management Team to identify any lock-down and procedural changes that may be required. • Complete your Post Emergency Record.
<p>Lock-out procedure</p>	<p>When an internal immediate danger is identified and it is determined that students should be excluded from buildings for their safety the Chief Warden on-site will take charge and activate the Incident Management Team if necessary.</p> <ul style="list-style-type: none"> • Call 000 for emergency services and seek and follow advice. • Announce lock-out with instructions about what is required. Instructions may include nominating staff to: <ul style="list-style-type: none"> ○ Lock doors to prevent entry ○ Check the premises for anyone left inside ○ Obtain Emergency Kit • Go to the designated assembly point/s school letter box. • Check that students, staff and visitors are all accounted for. • Report the emergency and lock-out to the Security Services Unit (24 hour, 7 days) on 9603 7999. • Notify your region and seek advice from your regional Manager, Operations and Emergency Management if required. • Where appropriate, confirm with emergency services personnel that it is safe to return to normal operations. • Maintain a record of actions/decisions undertaken and times. • Contact parents as required. <p>Actions after lock-out procedure</p> <ul style="list-style-type: none"> • Ensure any students, staff or visitors with medical or other needs are supported. • Advise the Security Services Unit and the region (regional Manager, Operations and Emergency Management) that the lock-out is over. • Determine whether to activate your parent re-unification process. • Determine if there is any specific information students, staff and visitors need to know (for example, parent reunification process or areas of the facility to avoid). • Print and issue pre-prepared parent letters and give these to students to take home. • Direct all Media enquiries to DET Media Unit on 9637 2871. • Ensure all staff are made aware of Employee Assistance Program contact details. • Contact the SSSO Network Coordinator if required. • Seek support from your region/regional Manager, Operations and Emergency Management as required. • Undertake operational debrief with staff and Incident Management Team to identify any lock-out and procedural changes that may be required. • Complete your Post Emergency Record.

Shelter-in-place procedure

When an incident occurs outside the school and emergency services or the Chief Warden determines the safest course of action is to keep students and staff inside a designated building in the school (as evacuation might reasonably expose people to a greater level of danger until the external event is handled), the Chief Warden on-site will take charge and activate the Incident Management Team if necessary.

- Call **000** for emergency services and seek and follow advice.
- Chief Warden activates the Incident Management Team.
- Move all students, staff and visitors to the pre-determined shelter-in-place area **the school sports stadium**
- Take your emergency kit/first aid kit (including your student and staff attendance lists and a copy of this EMP).
- Report the emergency to the Security Services Unit (24 hour, 7 days) on 9603 7999.
- Check that all students, staff and visitors are accounted for.
- Ensure communications with emergency services is maintained.
- Wait for emergency services to arrive or provide further information.
- Notify your region and seek advice from your regional Manager, Operations and Emergency Management if required.
- Where appropriate, confirm with emergency service personnel that it is safe to return to normal operations.
- Maintain a record of actions/decisions undertaken and times.
- Contact parents as required.

Actions after shelter-in-place procedure

- Ensure any students, staff or visitors with medical or other needs are supported.
- Advise the Security Services Unit that shelter-in-place is over.
- Determine whether to activate your parent re-unification process.
- Determine if there is any specific information students, staff and visitors need to know (for example parent reunification process or areas of the facility to avoid).
- Direct all Media enquiries to DET Media Unit on 9637 2871.
- Print and issue pre-prepared parent letters and give these to students to take home.
- Ensure all staff are made aware of Employee Assistance Program contact details.
- Contact the SSSO Network Coordinator if required.
- Seek support from your region/regional Manager, Operations and Emergency Management as required.
- Undertake operational debrief with staff and Incident Management Team to identify any shelter-in-place and procedural changes that may be required.
- Complete your Post Emergency Record.

Specific Emergency Response Procedures

Specific Procedures	Procedure Instructions
Intruder	<ul style="list-style-type: none"> • Call 000 for emergency services and seek and follow advice. • Report the emergency immediately to the Chief Warden. • Do not do or say anything to the person to encourage irrational behaviour. • Initiate action to restrict entry to the building if possible and confine or isolate the threat from building occupants. • Determine whether evacuation, lock-down or shelter-in-place is required. Do this in consultation with the Police where possible. • Evacuation only should be considered if safe to do so. • Report emergency to the Security Services Unit on 1800 126 126. • Notify your region and seek advice from your regional Manager, Operations and Emergency Management if required. • Contact parents as required. • Direct all Media enquiries to DET Media Unit on 9637 2871. • As appropriate insert any additional mitigation steps relevant to your facility that you have identified in your risk assessment
Bomb/substance threat	<p>If a suspicious object is found (or the threat identifies the location of a bomb)</p> <p><i>Immediate response</i></p> <ul style="list-style-type: none"> • Immediately clear and cordon off the area in the vicinity of the object. • Call 000 for police and seek and follow advice. • Report the threat to the Chief Warden/principal who will coordinate the emergency response until police arrive. • Report the emergency to the Security Services Unit on 9603 7999. • Do not approach, touch, tilt or tamper with the object. • As appropriate insert any additional mitigation steps relevant to your facility that you have identified in your risk assessment. <p><i>Evacuation</i></p> <ul style="list-style-type: none"> • Evacuate the school and: <ul style="list-style-type: none"> ○ Ensure students and staff are not directed past the object ○ Alert any other services co-located at the school site ○ Check that all students, staff and visitors are accounted for ○ Restrict all access to the site and ensure there are no barriers inhibiting access by police ○ As appropriate insert any additional mitigation steps relevant to your facility that you have identified in your risk assessment. <p><i>Communication</i></p> <ul style="list-style-type: none"> • Provide police with details of the situation, including actions you have taken and intend to take. Follow any advice provided by police. • Contact parents when evacuation is complete and it is safe to do so. • Notify your regional emergency management contact and seek advice if necessary. • Direct all Media enquiries to DET Media Unit on 9637 2871. • Await "all clear" advice from police before returning to school buildings to resume normal school activities. • As appropriate insert any additional mitigation steps relevant to your facility that you have identified in your risk assessment. <p>If a bomb/substance threat is received by telephone</p>

- **DO NOT HANG UP**
- Keep the person talking for as long as possible and obtain as much information as possible.
- Without alerting the caller, signal a co-worker to:
 - call 000 for police on a separate phone
 - notify the Chief Warden/principal
 - report emergency to the Security Services Unit on 9589 6266.
- Fill out the *Bomb Threat Checklist* and record the following details while you are on the phone to the caller (The *Bomb Threat Checklist* is provided in the "**Related forms**" section of your on-line EMP. The checklist should be located with staff who normally answer in-coming phone calls):
 - gender of caller
 - age of caller
 - accents and speech impediments
 - background noises
 - key phrases used
 - whether the threat is automated/taped/recorded.

Ask the caller:

- where exactly is the bomb/substance located?
- what time will the bomb explode/the substance be released?
- what will make the bomb explode/how will the substance be released?
- what does the bomb look like?
- what kind of device/substance is it?
- who put the bomb/substance there? Why was it put there?
- what kind of substance is it (gas, powder, liquid)? How much is there?
- where are you? Where do you live?
- what is your name? What are your contact details?
- Once the call is finished:
 - **DO NOT HANG UP** - it may be possible for police to trace the call if the telephone line is kept open, regardless of whether the caller hangs up.
 - Immediately:
 - inform the Chief Warden/principal if this has not yet been done
 - call 000 to report threat to police if this has not yet been done - use a different telephone line or mobile phone
 - clear and cordon off the area if the caller identified the location of the object. Do not approach, touch, tilt or tamper with the object.
 - implement evacuation and communication procedures as indicated in section "**If a suspicious object is found**" above
 - report the emergency to the Security Services Unit on 9589 6266
 - ensure all of the caller information has been written down and provided to police on arrival.
 - ***As appropriate insert any additional mitigation steps relevant to your facility that you have identified in your risk assessment.***

If a bomb/substance threat is received by letter

- Place the letter in a clear bag or sleeve and store in a secure place
- Avoid any further handling of the letter or envelope
- Call 000 for police and seek and follow advice
- Notify the Chief Warden/principal
- If the letter identifies the location of a device, immediately clear and cordon off the nominated area. Do not approach, touch, tilt or tamper with the object.
- Implement evacuation and communication procedures as indicated in section "**If a suspicious object is found**" above.
- Report emergency to the Security Services Unit on 9589 6266.

	<ul style="list-style-type: none"> • <i>As appropriate insert any additional mitigation steps relevant to your facility that you have identified in your risk assessment.</i> <p>If a bomb/substance threat is received electronically e.g. by email</p> <ul style="list-style-type: none"> • DO NOT DELETE THE MESSAGE • Call 000 for police and seek and follow advice • Notify the Chief Warden/principal • If the email identifies the location of a device, immediately clear and cordon off the area. Do not approach, touch, tilt or tamper with the object. • Implement evacuation and communication procedures as indicated in section "If a suspicious object is found" above. • Report emergency to the Security Services Unit on 9589 6266. • <i>As appropriate insert any additional mitigation steps relevant to your facility that you have identified in your risk assessment.</i> <p>If you are at the site of an explosion</p> <ul style="list-style-type: none"> ○ Direct staff to shelter students under sturdy tables or desks if objects are falling around you. ○ Implement evacuation and communication procedures as indicated in section "If a suspicious object is found" above. Do not retrieve personal belongings or make phone calls when evacuating. ○ Help others to leave the area. Use stairs instead of elevators. ○ Be aware of weakened floors and stairways and watch for falling debris. ○ Once out of the affected building: <ul style="list-style-type: none"> ▪ Move students away from windows and glass doors or other potentially hazardous areas ▪ Use caution to avoid debris that could be hot or sharp ▪ Call 000 for emergency services and seek and follow advice ▪ Report the emergency to the Security Services Unit on 9589 6266 ▪ Be aware of any potential secondary explosions ▪ Limit use of phones as communications systems may become congested. ○ <i>As appropriate insert any additional mitigation steps relevant to your facility that you have identified in your risk assessment.</i>
<p>Severe weather event</p>	<ul style="list-style-type: none"> • Call 000 if emergency services are needed and seek and follow advice. • Before the storm, store or secure loose items external to the building, such as outdoor furniture and rubbish bins. • Secure windows (close curtains and blinds) and external doors. If necessary, tape windows and glass entrances. Utilise boards and sandbags if required. • During a severe storm: <ul style="list-style-type: none"> ○ Remain in the building and keep away from windows. ○ Restrict the use of telephone landlines to emergency calls only, particularly during a thunderstorm. • Report any matter concerning the safety and wellbeing of students, staff and visitors to the Chief Warden. • Disconnect electrical equipment - cover and/or move this equipment away from windows. • Report emergency to the Security Services Unit on 1800 126 126. • Notify your region and seek advice from your regional Manager, Operations and Emergency Management if required. • Listen to local radio or TV on battery-powered sets for weather warnings and advice.

	<ul style="list-style-type: none"> • <i>As appropriate insert any additional mitigation steps relevant to your facility that you have identified in your risk assessment</i>
Influenza pandemic	<p>Appendix B of the DET Pandemic Influenza Incident Response Plan provides details of the key actions for schools to implement at each of the preparedness and response stages of a pandemic influenza event.</p>
Loss of essential services	<p>When there is a loss of essential services (power, water, communications):</p> <ul style="list-style-type: none"> • Determine which services are affected and the extent of the impact. • Respond to any immediate threat to student and staff safety and isolate/secure buildings/areas if necessary. • Call 000 if emergency services are required to respond e.g. power lines down in front of school. • Contact the relevant provider/s to report outage and ascertain when restoration will occur. • Consider consequential impacts, e.g. power outage will impact on phone lines and IT systems. • Contact your Senior Education Improvement Leader or regional Manager, Operations and Emergency Management for advice and support if necessary. • Report the loss of essential services to the Security Services Unit on 1800 126 126. • Contact parents as required. • Refer to the school's Business Continuity Management Plan if the essential services are likely extend beyond 24 hours. • Insert any additional steps, including mitigation steps that you have identified in your risk assessment
Building fire	<ul style="list-style-type: none"> • Call 000 for emergency services and seek and follow advice. • Activate the fire alarm. • If appropriate, follow the procedure for on-site evacuation. • Report the emergency immediately to the Chief Warden who will convene your IMT if necessary. • Extinguish the fire (only if safe to do so). • Evacuate to the <i>school letter box</i>, closing all doors and windows. • Check that all areas have been cleared and notify the Chief Warden. • Check that all students, staff, visitors and contractors are accounted for. • Report emergency to the Security Services Unit on 9603 7999. • Notify your region and seek advice from your regional Manager, Operations and Emergency Management if required. • Contact parents as required. • Direct all Media enquiries to DET Media Unit on 9637 2871.

Emergency Contacts

Tags: Your school is tagged as Client School

School Contacts

Key Roles	Name	Phone	Phone (After Hours)	Mobile
Principal	Fiona Hermon	55765433	55723213	0448969636
Assistant Principal/s				
Business Manager	Victoria Wallish	55765433	0	0
Year level Coordinators	Fiona King	55765433	0	0
School Bus Coordinators				
First Aid Officer	Fiona Hermon	55765433	55723213	448969636
School Welfare Officer				
OH and S Representative				
School Chaplan				
School Council President	Stella Johnston			

DET Contacts

Roles	Name	Phone	Mobile
Regional Director	Stephen Fraser	8397 0301	
Regional Office (swvr@edumail.vic.gov.au)	General enquiries,	1300 333 232,	
Manager, Operations & Emergency Management	Andrea Cox	(03) 4334 0509	0407 861 841
Emergency Management Support Officer	Peter Woodman	03 5215 5220	0436 678 268
Security Services Unit		1800 126 126	
Cushman & Wakefield		1300 133 468	
Employee Assistance Program		1300 361 008	

Media Unit (on call 24/7)		(03) 8688 7776	
SEIL	Lindy Sharp		0428952343
SSSO Team Leader	Caroline Shepherd		0408713989

Local / Other Organizations

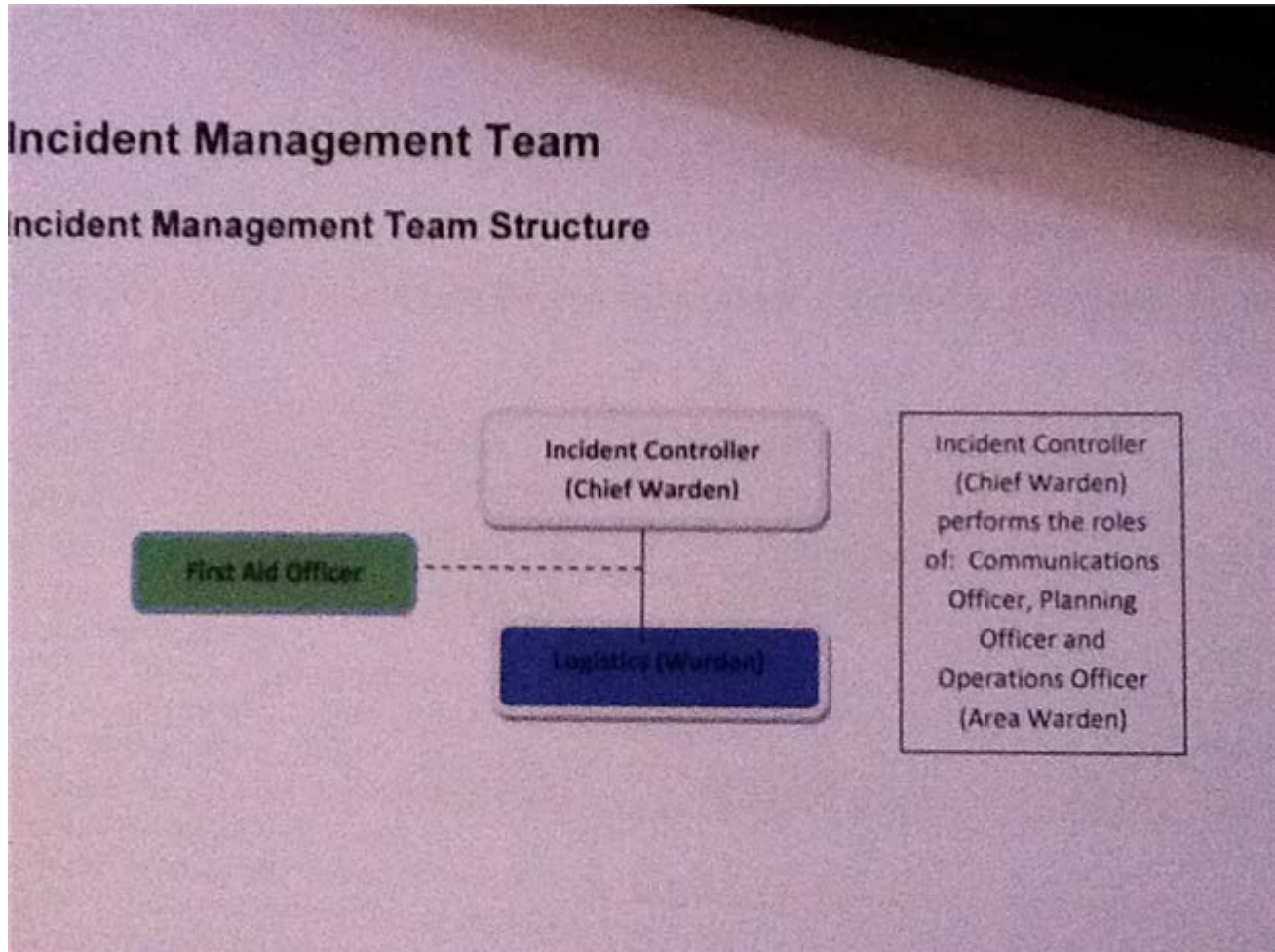
Name	Phone
Police Station	55765222 (Penshurst)
Hospital/s	Hamilton 5551822
	Penshurst 55523000
Gas	
Electricity	
Water Corporation	130092666
Facility Plumber	
Facility Electrician	
Local Government	

School Bus Emergency Contacts

Bus Routes	Areas Services	Schools serviced or bus coordinating school	Contact Details
N/A			

Incident Management Team

IMT Structure



Roles	Primary Contact	Secondary Contact
Chief Warden/Education Commander	Name: Fiona Hermon Phone/Mobile: 0448969636	Name: Fiona King Phone/Mobile: 0355765433
Planning Officer	Name: Fiona Hermon	Name: N/A

	Phone/Mobile: 0448969636	Phone/Mobile: 0
Operations Officer (Area Warden)	Name: Fiona Hermon Phone/Mobile: 0448969636	Name: N/A Phone/Mobile: 0
Communications Officer	Name: Fiona Hermon Phone/Mobile: 0448969636	Name: N/A Phone/Mobile: 0
Logistics Officer (Warden)	Name: Fiona Hermon Phone/Mobile: 0448969636	Name: N/A Phone/Mobile: 0
First Aid Officer	Name: Fiona King Phone/Mobile: 0455223764	Name: Mel Robertson Phone/Mobile: 55765433

Incident Management Team Roles & Responsibilities

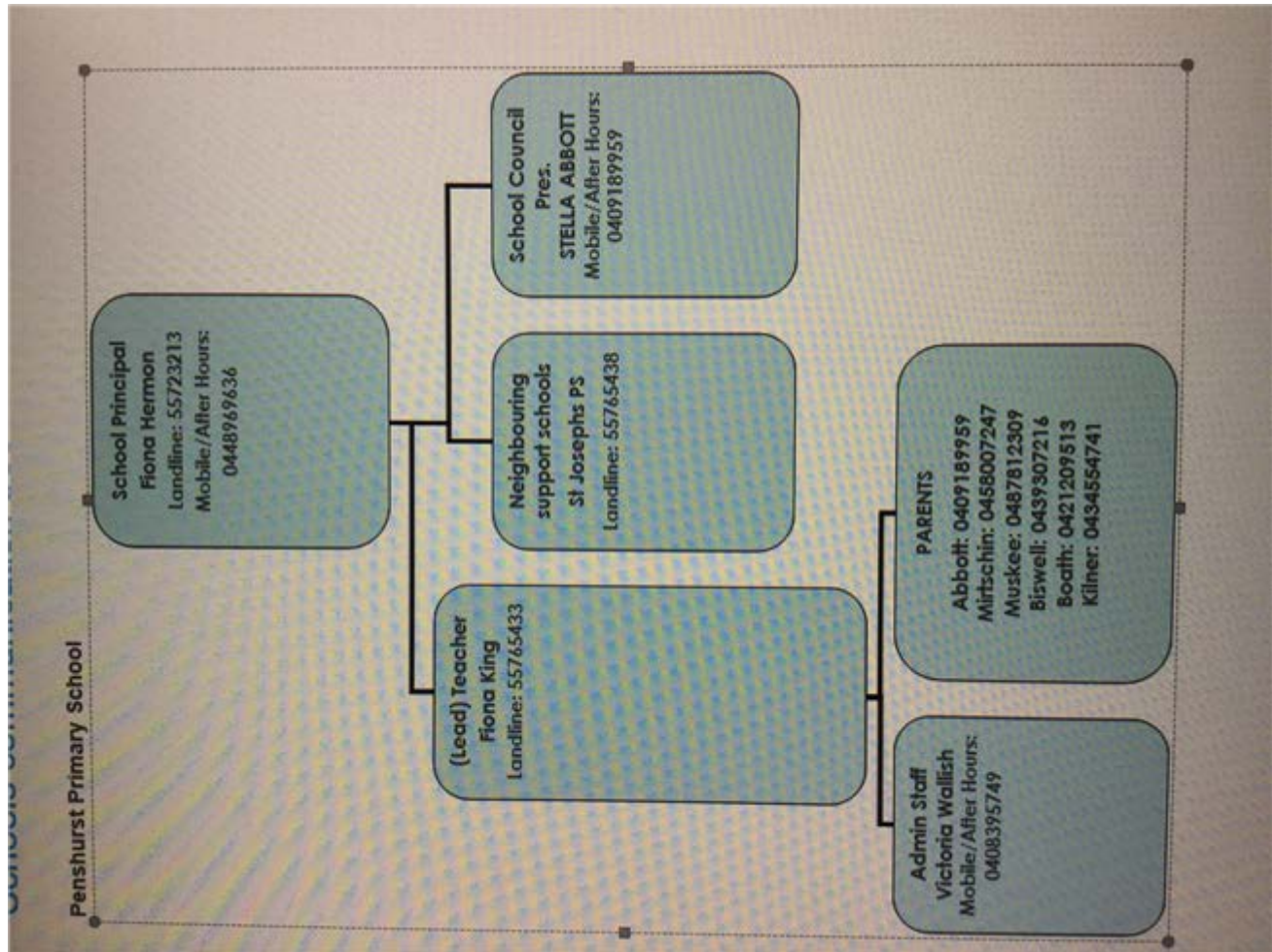
Core Procedures	Procedure Instructions
Chief Warden/Education Commander	<p>Pre-Emergency</p> <ul style="list-style-type: none"> • Maintain current contact details of IMT members. • Conduct regular exercises/drills. • Ensure students/staff with special needs list and staff trained in first aid list are up to date. • Ensure our emergency response procedures are kept up-to-date. • Ensure staff on the IMT are aware of their responsibilities. <p>During Emergency</p> <ul style="list-style-type: none"> • Attend the emergency control point. • Ascertain the nature and scope of the emergency. • Ensure that the emergency services have been notified. • Ensure the appropriate response has been actioned. • Convene our IMT as required. • Initiate evacuation of affected areas/lock-down/lock-out/shelter-in-place as required. • Brief the incoming emergency services and respond to their requests. • Report the emergency to the Security Services Unit on 9589 6266. <p>Post- Emergency</p> <ul style="list-style-type: none"> • When the incident is rendered safe or the emergency services returns control, notify the IMT members to have staff and students return to normal operations. • Organise debrief with the IMT and, where appropriate, with any attending emergency Service. • Compile a report for the IMT and region and notify Security Services Unit (24 hour, 7 days) and the region.
Planning Officer	<p>Pre-Emergency</p> <ul style="list-style-type: none"> • Assist the Chief Warden. • Identify resources required. • Participate in emergency exercises/drills. <p>During Emergency</p> <ul style="list-style-type: none"> • Attend the emergency control point. • Ascertain the nature and scope of the emergency. • Report any changes in the situation to the Chief Warden. • Act as directed by the Chief Warden. • Plan for contingencies. <p>Post- Emergency</p> <ul style="list-style-type: none"> • Collect and evaluate information relating to the emergency. • Identify recovery needs and develop a recovery plan (if required).
Operations Officer (Area Warden)	<p>Pre-Emergency</p> <ul style="list-style-type: none"> • Regularly check and report on deficiencies of emergency equipment and kits. • Coordinate Safety practices (e.g. clear egress paths, access to first attack equipment e.g. fire extinguishers and disposal of rubbish) by wardens throughout their areas. • Participate in emergency exercises/drills. <p>During Emergency</p>

	<p>On hearing alarm or becoming aware of an emergency, the Operations Warden will:</p> <ul style="list-style-type: none"> • Attend the emergency control point. • Communicate with the Chief Warden by whatever means available and act on instructions. • Implement the emergency response procedure relevant to the floor or area and ensure that the Chief Warden is notified. • Direct logistics officer (wardens) to check the floor or area for any abnormal situation. • Commence evacuation if the circumstances on their floor or area warrant this. • Control the movement of people. • Co-opt persons as required to assist a logistics officer (wardens) during an emergency. • Ensure that any implications for regular bus/student transport arrangements for the school or clients schools are addressed. • Confirm that the logistics officer's (warden) activities have been completed and report this to the Chief Warden or a senior officer of the attending emergency services if the Chief Warden is not contactable. <p>Post Emergency</p> <ul style="list-style-type: none"> • Compile report of the actions taken during the emergency for the debrief.
<p>Communications Officer</p>	<p>Pre-Emergency</p> <ul style="list-style-type: none"> • Assist the Chief Warden. • Attend training in the use of the school's communication system. • Maintain records and logbooks and make them available for emergency response. • Ensure emergency and parent contact details are up-to-date. • Participate in emergency exercises/drills. <p>During Emergency</p> <ul style="list-style-type: none"> • Attend the emergency control point. • Ascertain the nature and location of the emergency. Maintain up to date information. • Confirm that emergency services have been notified. • Notify appropriate IMT members. • At the direction of the Chief Warden provide instruction and information to staff, students and parents as required. • Keep a log of events that occurred during the emergency. • Act as directed by the Chief Warden. <p>Post- Emergency</p> <ul style="list-style-type: none"> • Collate logs of events completed by all IMT members during the emergency for the debrief and ensure they are secured for future reference. • Contact parents as required.
<p>Logistics Officer (Warden)</p>	<p>Pre-Emergency</p> <ul style="list-style-type: none"> • Ensure staff and students are aware of the emergency response procedures. • Carry out safety practices (e.g. clear egress paths, access to first attack equipment e.g. fire extinguishers and disposal of rubbish). • Participate in emergency exercises/drills. <p>During Emergency</p> <p>Persons selected to perform as Logistics Warden will carry out activities as set out in the emergency response procedures and as directed by the Operations Warden (Area Warden). Activities may include the following:</p> <ul style="list-style-type: none"> • Attend the emergency control point. • Operate the communication system in place. • Check that any fire doors and smoke doors are properly closed

	<ul style="list-style-type: none"> • Close or open other doors in accordance with the emergency response procedures. • Search the floor or area to ensure all people have evacuated. This function is of greater importance than a later physical count of those evacuated. • Ensure orderly flow of people into protected area. • Assist occupants with disabilities. • Act as lead of groups moving to nominated assembly areas. • Report status of required activities to the operations officer (area warden) on their completion. • Act as directed by the Chief Warden. <p>Post- Emergency</p> <ul style="list-style-type: none"> • Compile report of the actions taken during the emergency for the debrief.
First Aid Officer	

Communication Tree

Communication Tree



Business Continuity

Business continuity planning is intended to minimise any safety, financial, educational, operational, reputational and/or other damaging consequences of a disruptive event.

- An inability to access your school site
- A loss of IT / telephone / data / power
- A loss of shortage of staff or skills

1. Arrangements to manage inability to access your school site

You may like to consider mutual support agreements with other schools/other local premises, virtual learning, scheduling offsite excursions

Details of arrangements	Look at sharing facilities with St Josephs (if possible)
--------------------------------	--

Name	Contact Details	Support Role

2. Arrangements to manage a loss of technology / telephony / data / power

You may like to consider backing up school data, use of paper based systems, flexible lesson plans, generators, emergency lighting

Details of arrangements	This is a regular occurrence - we just have to work around.
--------------------------------	---

Name	Contact Details	Support Role

3. Arrangements to manage a loss or shortage of staff or skills

You may like to consider temporary staff arrangements, multi-skilling/cross training, alternate operational arrangements, suspending non critical activities and/or mutual support with other school(s)

Details of arrangements	We already use video conference for LOTE and staff are happy to take on extra hours when required (3 part time staff members)
--------------------------------	---

Name	Contact Details	Support Role

Business Continuity Checklist

Action	Actioned?
Activate the school's Incident Management Team	
Evaluate the impact of the incident for: <ul style="list-style-type: none"> • School activities • Impact over time • Manageability • Staffing levels • Resources for recovery 	
Identify actions to mitigate impact, including: <ul style="list-style-type: none"> • Suspension of non-critical activities • Mutual support arranged with other schools • Distance/virtual learning Use of different areas within site • Off-site activities • Back-up of key school data • Using paper based systems • Flexible lesson plans • Using generators, portable lighting 	
Produce an Action Plan for maintaining critical activities that includes: <ul style="list-style-type: none"> • Priorities • Communications • Resource deployment • Allocation of specific roles • Monitoring • Reporting • Stakeholder engagement 	
Establish a register to log all decisions and actions	
Establish a register to log all financial expenditure incurred	

<p>Secure resources for continuity/recovery including:</p> <ul style="list-style-type: none"> • Staffing • Premises • IT and equipment • Welfare 	
<p>Deliver appropriate communications including to:</p> <ul style="list-style-type: none"> • Staff • Parents/Carers • School Council • School bus contractor/bus coordinating school (as appropriate) • Outside School Hours Care provider • Other users of site • Region • Suppliers • Local Shire/Municipality (as appropriate) 	

